

BRIAN DEUTSCH '98 MEMORIAL

▲ GOLF ▲

TOURNAMENT

\$150/PERSON

INCLUDES:

SHOTGUN START ROUND OF 18

BEER BEVERAGE SERVICE

THROUGHOUT THE DAY

BBQ LUNCHEON

PRIZES:

LONGEST DRIVE

STRAIGHTEST DRIVE

CLOSEST TO PIN

PUTTING CONTEST

THURSDAY, JUNE 12, 2025
VALLEYBROOK COUNTRY CLUB

7AM CHECK-IN

8AM SHOT-GUN START

1PM BBQ LUNCHEON & PRIZES

SPONSORSHIPS:

\$1,000 CORPORATE SPONSOR

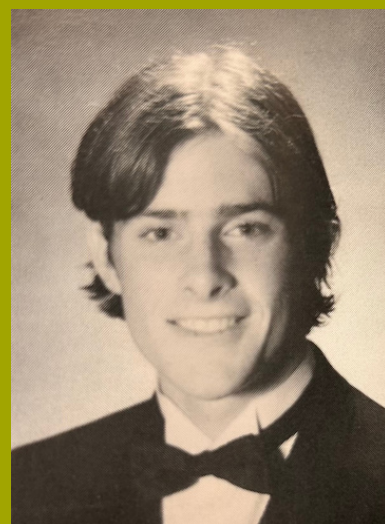
\$300 STRAIGHTEST DRIVE

\$300 CLOSEST-TO-PIN

\$200 TEE SPONSOR

\$200 HOLE SPONSOR

**SPONSORSHIPS INCLUDE SIGNAGE, SOCIAL
MEDIA, WEBSITE AND E-NEWSLETTER
RECOGNITION**



**JOIN US IN REMEMBERING
BRIAN, GOLFING WITH
FRIENDS, AND SUPPORTING
THE STUDENTS OF CAMDEN
CATHOLIC.**

**REGISTER &
SPONSOR**





BRIAN DEUTSCH '98 MEMORIAL GOLF TOURNAMENT
Benefiting The Students of Camden Catholic

Thursday, June 12, 2025 at Valleybrook Country Club

7-8AM Check-In & Registration | 8AM Shotgun Start |

1-3PM Lunch Reception & Awards

\$150/Person, \$300/Duo, \$600/Foursome

Includes cart, beverage cart refreshments, BBQ lunch buffet & beer/house
selection drinks

NAME _____

PHONE _____ EMAIL _____

ADDRESS I _____

ADDRESS II _____

CITY _____ STATE _____ ZIP _____

GOLF REGISTRATION

☐ SINGLE GOLFER \$150: _____

☐ DUO \$300 GOLFER NAMES: _____

☐ FOURSOME \$600 GOLFER NAMES: _____

SPONSORSHIP OPPORTUNITIES

☐ CORPORATE SPONSORSHIP - \$1,000
Includes golf foursome, event signage, website and social media
recognition

☐ LONGEST DRIVE - \$300
Includes course signage, website and social media recognition
STRAIGHTEST DRIVE - \$300

☐ Includes course signage, website and social media recognition
CLOSEST-TO-PIN - \$300

☐ Includes course signage, website and social media recognition
TEE SPONSOR - \$200

☐ Includes course signage, website and social media recognition
HOLE SPONSOR - \$200

☐ Includes course signage, website and social media recognition

SPONSOR NAME FOR SIGNAGE: _____
OR SEND LOGO TO DEANNALUCAS@LABORFIRST.COM

DEADLINE TO REGISTER MAY 30, 2025

CHECKS PAYABLE TO 1887 EDUCATION FOUNDATION ATTN: DEUTSCH MEMORIAL GOLF OUTING

Send to: LaborFirst, Attn: Deanna Lucas 3000 Midlantic Dr. Suite 100 Mt. Laurel, NJ 08054

QUESTIONS? CONTACT DEANNA LUCAS: DEANNALUCAS@LABORFIRST.COM or 856-832-6192